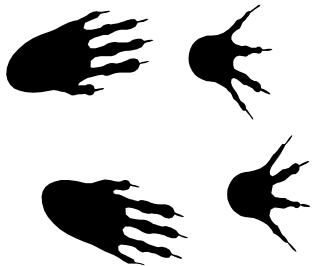


# MAINE WILDLIFE

IN YOUR OWN BACKYARD





Can you identify wildlife in your backyard by the signs they leave behind? Animals leave signs such as; tracks, scat, scratch marks and their scent as they travel an area.



This animal has left many signs for you to discover.



Den  
Tree

Enjoys eating white pine blister rust.

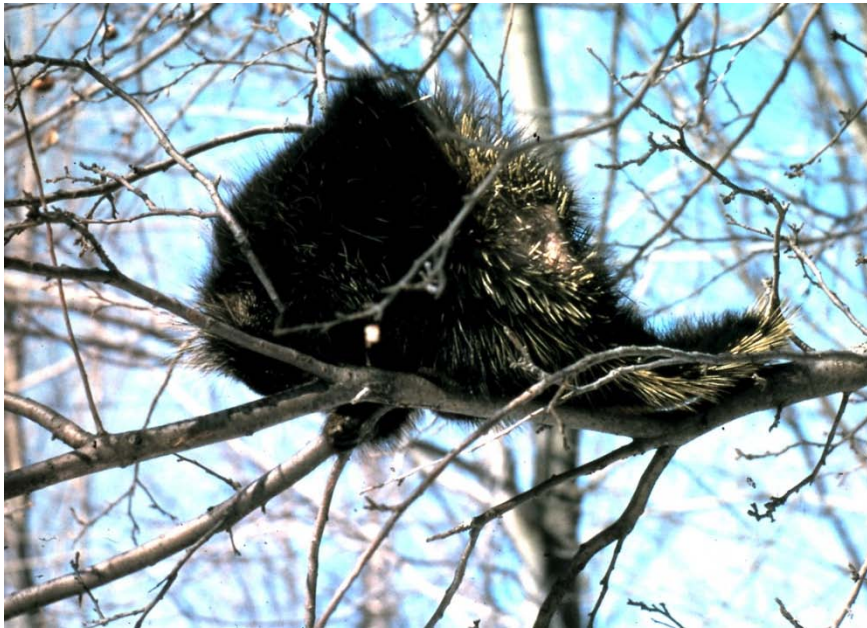


Eventually killing the tree.



Scat litters the ground.

Sharp claws and a sturdy tail ...



...make for an excellent climber.



# Porcupine



Porky won't prick you unless you touch him.



## MOOSE



The moose track is a cloven print.



# Painted Turtle



Enjoying the sun's warm rays.



Laying her eggs in beach sand.

# Mink



The mink is cute but a vicious fighter.





# Coyotes



You can hear their songs at Beaver Park during the evening hours.



Nail impressions are visible.



# Fisher



Trapped for its fur.



The fisher is a fast and vicious hunter. It can kill a porcupine by biting its nose and flipping it onto its back and then attacking its soft underbelly.

# Muskrat



A member of the rodent family.



# Bobcat



Short stubby tail with 2 or 3 black bars and a black tip. Ears are slightly tufted, not as tufted as the lynx's ears.

Cats keep their claws retracted, hence claw marks do not show in their tracks.



# Pine Marten



Also known as American Sable



Red Squirrel



The red squirrel has a bushy tail.



Red Squirrel Meden

Chipmunk



The chipmunk doesn't have a bushy tail and has strips along its back.



# Woodchuck “Groundhog”



Baby Woodchuck



The woodchuck hibernates in its winter burrow.



## Whitetail Deer



Winter Deeryard



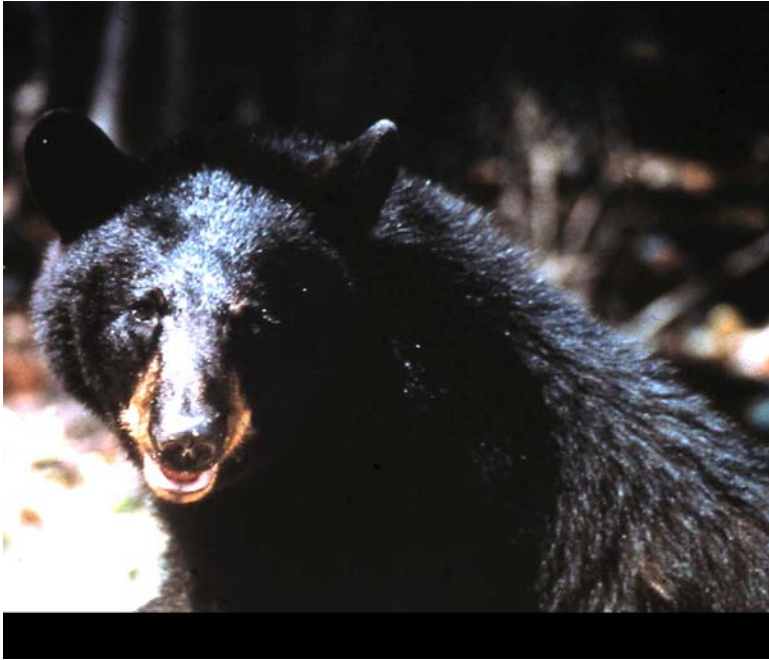
Deer Track



Deer Trail



# Black Bear



Black Bear Front Foot Track



# Snowshoe Hare



Snowshoe Hare with summer fur. Winter fur is white.

Track



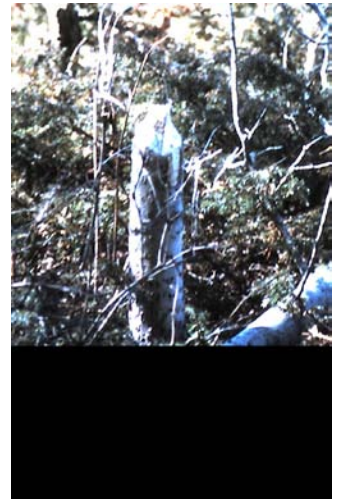
Scat

# Beaver



The Beaver uses his flat tail to slap the water, causing a loud resounding splash. His webbed hind feet and flat tail help make him a swift swimmer.

Tree chewed  
by a beaver.



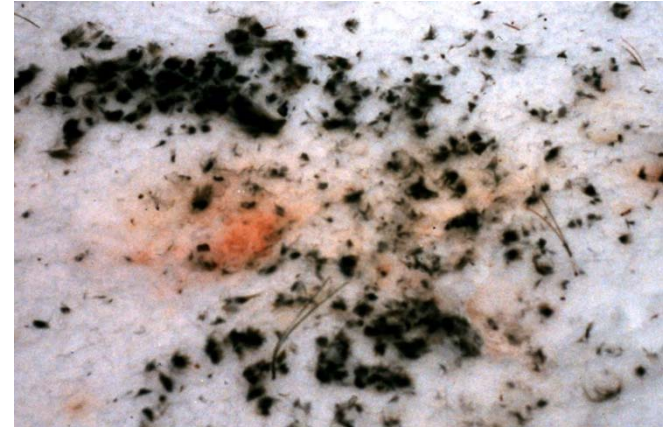
Beaver Lodge



## Red Fox



A fox will travel in a straight line to conserve energy.



Remains of a fox meal.





# Skunk

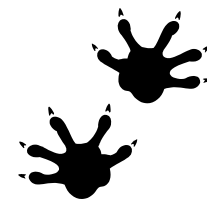
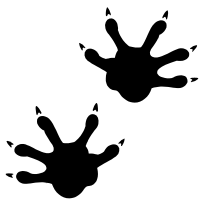


The skunk will always warn you by stomping it's hind feet before spraying it's lovely sent.

# Raccoon



The raccoon has hand like tracks.



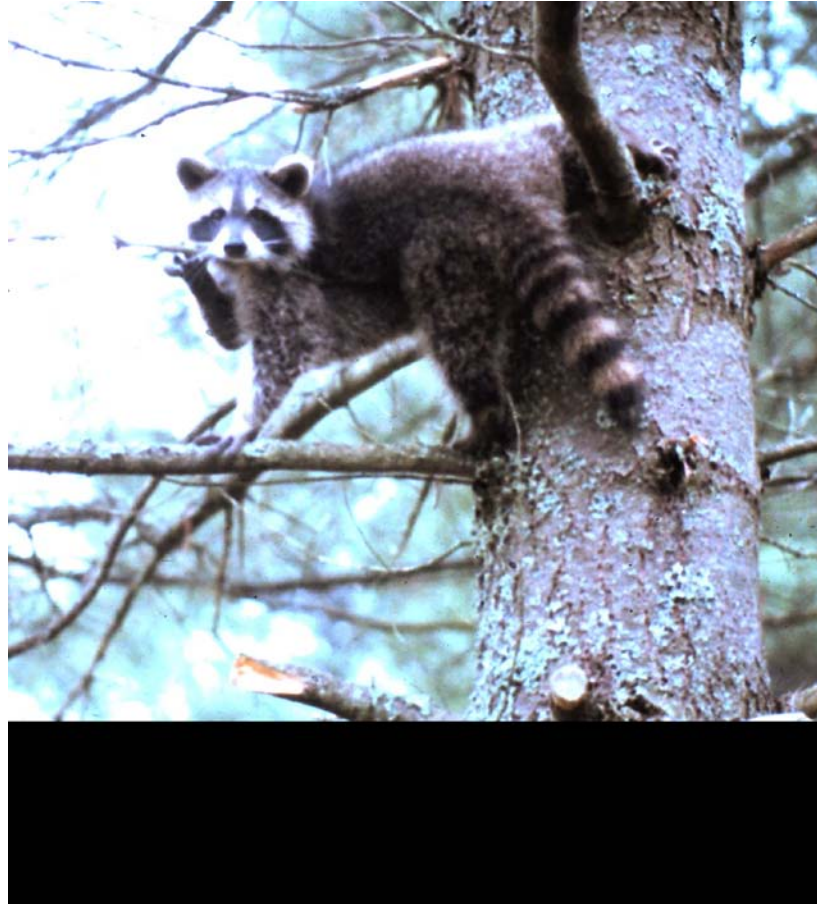
## QUIZ



How were these tracks made?



# Waving Good Bye!



THE END



**This presentation was created by Verla Brooks.**

The followings slides were courtesy of Bill Cross / Inland Fisheries and Wildlife:

Mink  
Fisher and Fisher Tracks  
Bobcat  
Pine Marten  
Beaver