

**Welcome to A
Beaver Park
Winter Wonderland**



Enjoying a winter walk on the park road.



ARNDT TRAIL



Grooming the ski trails.

The cross-country ski trails are groomed for traditional skiing.



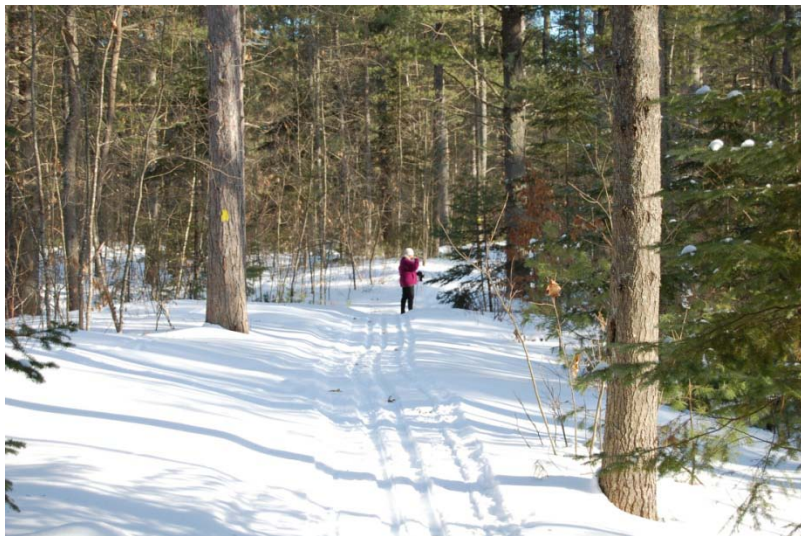
Ski trails after a winter storm.



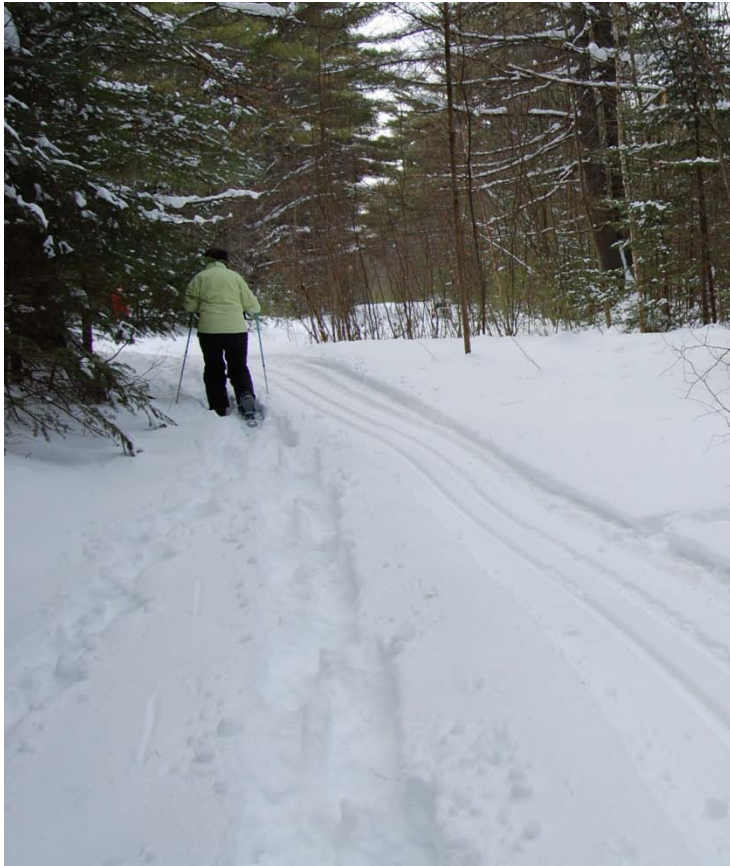
There is a lot of work involved before the ski trails can be groomed after a snowstorm.



Excellent ski conditions on a marked and groomed Beaver Park Trail.



Enjoying a great day of cross-country skiing on excellent groomed trails in your own back yard at Beaver Park!



The trails are wide enough for people to enjoy snowshoeing along the side of the groomed ski trail.



Park patrons often enjoy walking on the park road.



Plowing at the Park is done with the tractor and the plow truck by the Park Ranger. The park road is plowed to the Middle Pond picnic shelter by public works.

Grouse Track



Signs of wildlife along the trails.



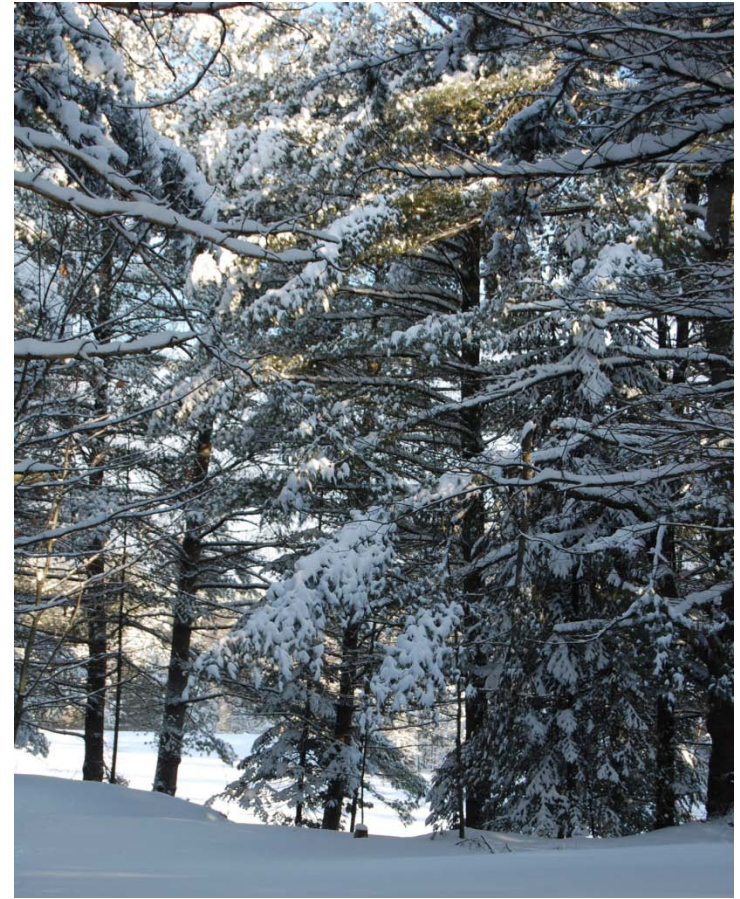
Deer
enjoy
walking
on the
packed
ski trails.



Bird feathers .



Snowshoe Hare Trail.



Winter wonderland scenes.



March 2009 snowstorm





All four seasons are beautiful at Beaver Park. Soon the spring wildflowers will be blooming and the ponds will offer a refreshing dip on those hot summer days.